

SPECIAL SERIES

Understanding Lansing

BY MELANIE JONGSMA

LANSING, Ill. (January 2018) - If you've ever wondered why Lansing has an airport, or what a Trustee does, or how many people work at Village Hall, you are not alone. Though Lansing has maintained a small-town atmosphere in our neighborhoods and businesses, there is a complex network of people and positions who are involved in day-to-day operations.

The Lansing Journal is beginning this "Understanding Lansing" series as a guide for residents who

want to see the key roles and how they work together.

THIS CHART

The organizational chart below shows only the names and positions that are most familiar to most Lansing residents. At the top are the Department Heads, who have various interactions with the public. Near the bottom are the elected officials who were chosen by the community.

The **BLUE BOX** positions are all appointments, not hires,

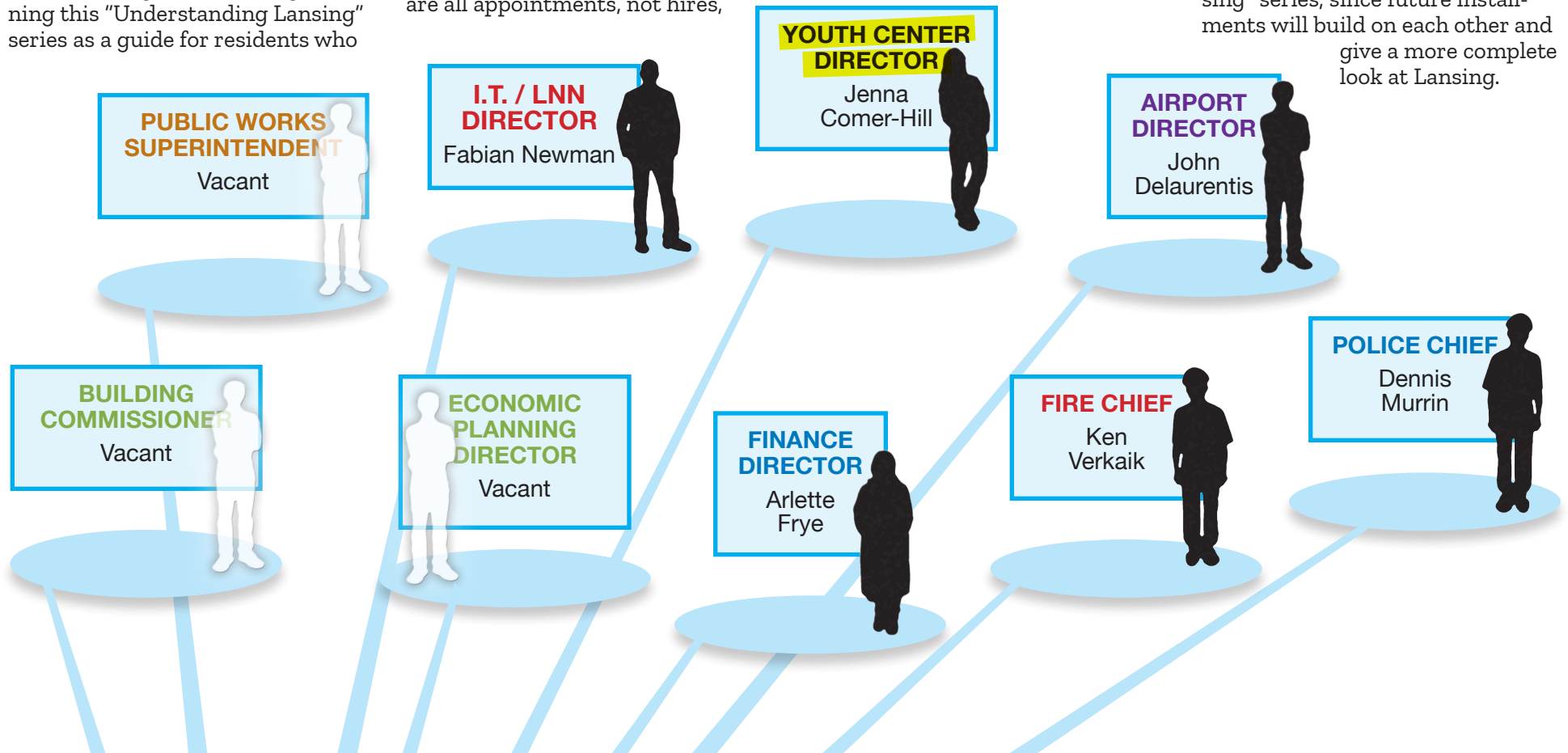
which means they require approval by the Board of Trustees.

The Trustees are **COLOR CODED** to show which Department Heads the Mayor has assigned them to. The Trustees are not in a supervisory role over the Department Heads, but each Trustee is expected to be familiar with his or her department and to provide a report of that department's activities at Village Board meetings.

JUST A SLICE

This particular chart shows just a slice of Lansing; it does not include the School Boards, the Library Board, or the Parks Board, for example. Those Boards are separate entities whose members are elected and have an impact on community life, but they are not part of the Village organizational structure.

We hope you'll hang on to each page in this "Understanding Lansing" series, since future installments will build on each other and give a more complete look at Lansing.



VILLAGE ADMINISTRATOR

Dan Podgorski

With the consent of the Mayor and approval from the Trustees, the Administrator appoints Department Heads.



EXECUTIVE ASSISTANT/ COMMUNICATIONS DIRECTOR

Ken Reynolds



BOARDS AND COMMISSIONS

Planning & Zoning (9 members)

Fire & Police (5 members)*

Enhanced 911 (5 members)

Police Pension (6 members)

Fire Pension (5 members)

*This is the only Commission that has hiring and promoting responsibilities for the departments it serves.

VILLAGE TRUSTEES

Tony Delaurentis (2019)

Mike Skrbina (2019)

Jerry Zeldenrust (2019)

Maureen Grady-Perovich (2021)

Brian Hardy (2021)

Mike Manno (2021)



VILLAGE PRESIDENT

Mayor Patty Eidam (2021)

With approval from the Trustees, the Mayor appoints the Village Administrator as well as members of all the Boards and Commissions.



VILLAGE CLERK

Vivian Payne (2021)

The Clerk is a liaison between residents and the Village. She keeps record of proceedings at all public meetings of the Board and Executive Sessions.



LANSING VOTERS

Residents who vote are responsible for filling the three elected positions above, and those elected officials then impact community life by appointing and managing various departments and commissions. These officials are elected to a four-year term. The year behind each name indicates the date that person's current term is up.

